







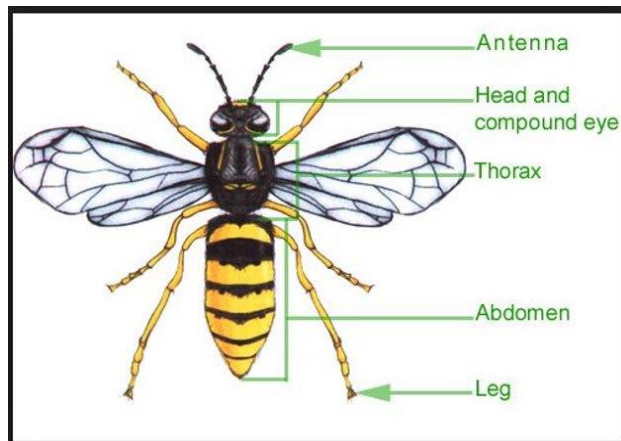
Classification and Keys - Knowledge Organiser Year 4 Summer 1

VOCABULARY

vertebrate An animal that has a backbone.

invertebrate An animal that has no backbone.

Vertebrate	Invertebrate
	
	
	
	

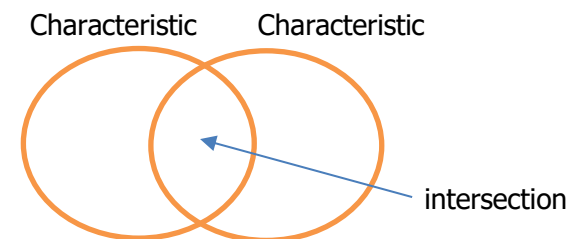


characteristic	Something a living thing has that helps to identify it (e.g., how it moves, whether it lays eggs, number of legs).
antennae	Long thin sensors on the head.
abdomen	The lower part of an invertebrate's body, containing the digestive organs.
thorax	The part of the body between the neck and the abdomen. In insects, the wings and legs are attached to it.
exoskeleton	A rigid outer covering of an animal's body.

classify To sort things into groups or sets so that everything in one group shares similar characteristics.

identify To establish what something is.

Venn diagram



intersection The place where two or more parts meet, join or cross over.

Classification Key

A set of questions to help in identifying something.

